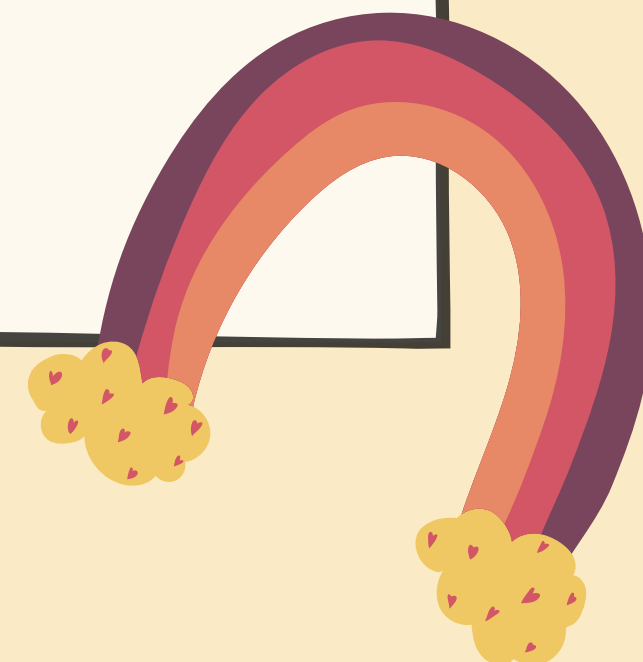
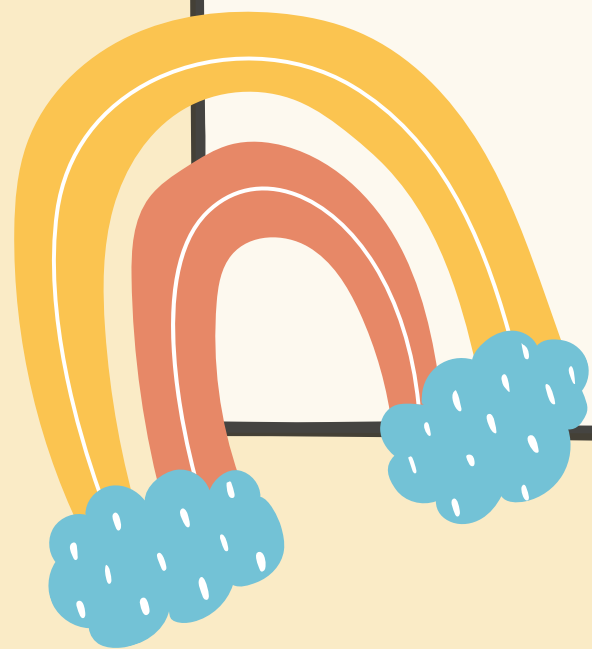


3RD GRADE CURRICULUM NIGHT

August 2023



3RD GRADE SCHEDULE

7:40– 7:55 Morning Announcements/Morning Meeting

7:55–9:10 Math

9:10–9:50 Writing

9:50–10:35 Specials (each day if dependent on the teacher)

10:35– 11:05 Recess

11:05–12:15 Reading

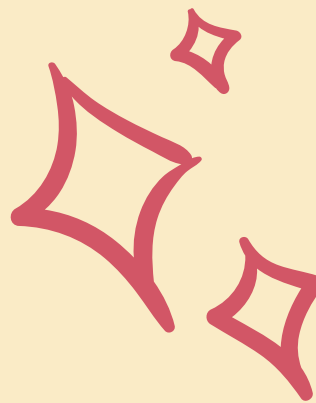
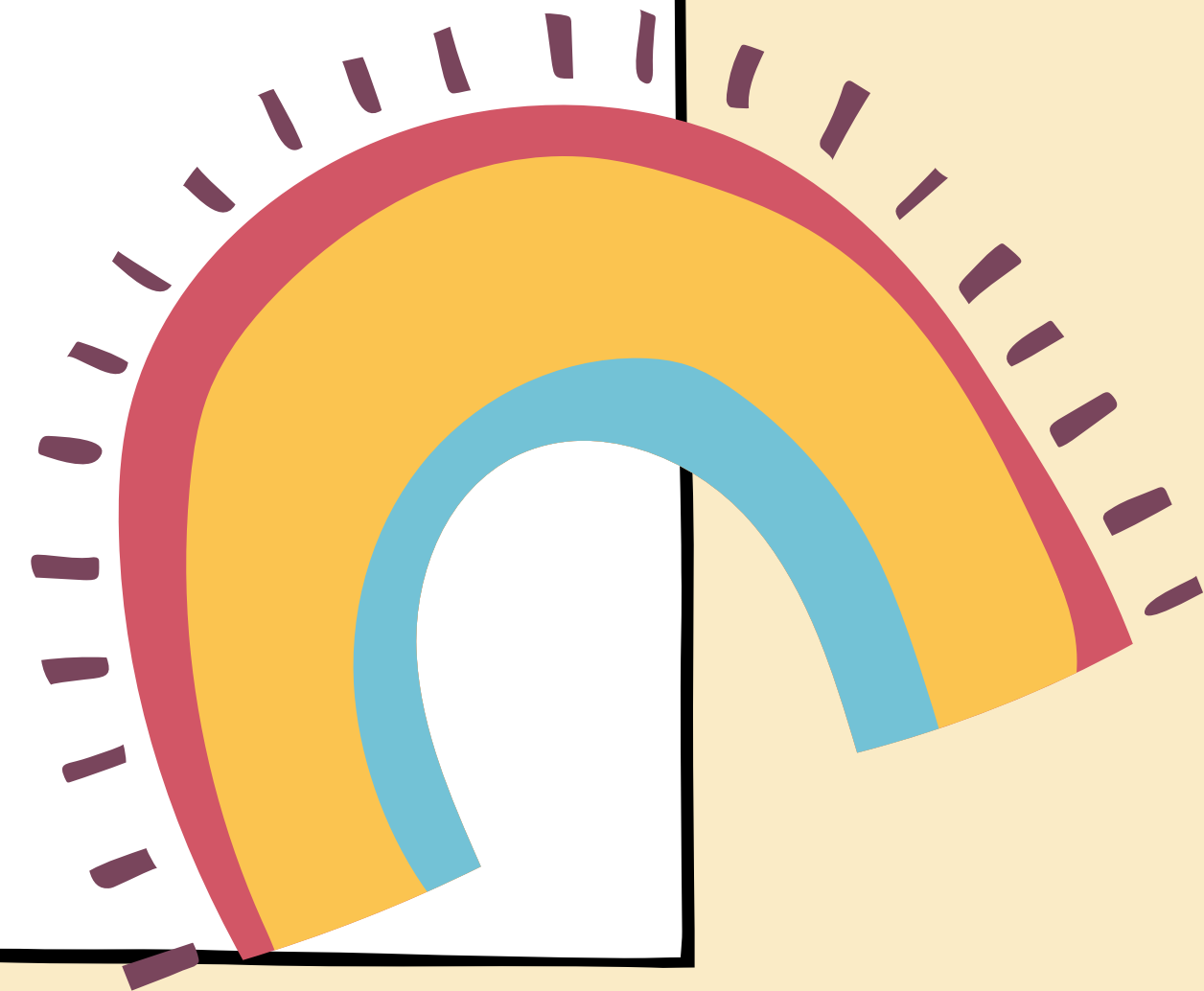
12:15– 12:45 Lunch


12:45–1:30: Science or Social Studies

1:30–1:50 Phonics

1:50–2:10 Tiger Time

2:10–2:15 Pack Up & Dismissal





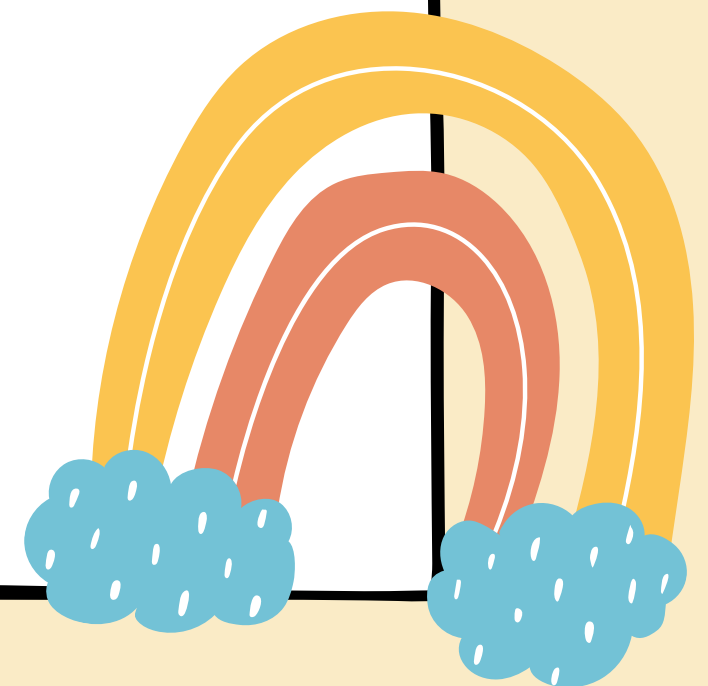
SPECIALS TEACHERS

Physical Education: Coach Clay & Coach Morris
braddockc@fultonschools.org Morris1@fultonschools.org

Art: Ms. Glastetter
glastetterj@fultonschools.org

STEM: Mr. Dunmire
Dunmiredunmiret@fultonschools.org

Media Center: Ms. Scholberg
scholbergl@fultonschools.org



THURSDAY FOLDERS

This year, we will send Thursday Folders home every other week. This is another form of communication for parents regarding how their child is doing in class.

Here are a couple of things to take note of:

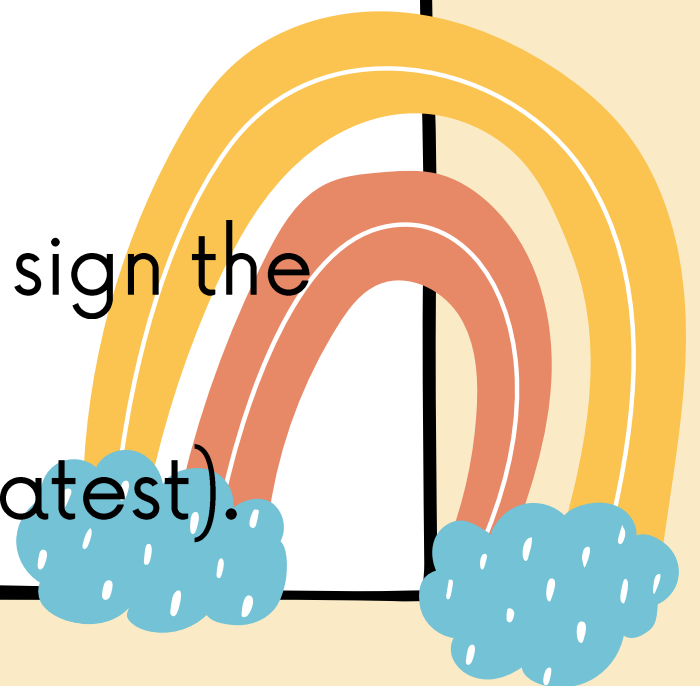
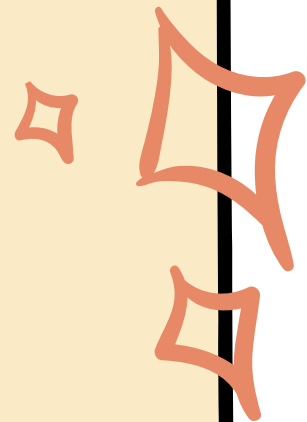
Graded papers will be coming home in these folders. Please return all graded papers back to school in the folder.

Any student work (non-graded work) on the left side of the folder can be kept at home.

The left side will also have flyers and information from the front office and school.

On the very back of the folder, there will be a progress report. Please sign the report or leave any comments for the teacher if needed.

Please return the folder and graded papers Friday (Monday at the latest).



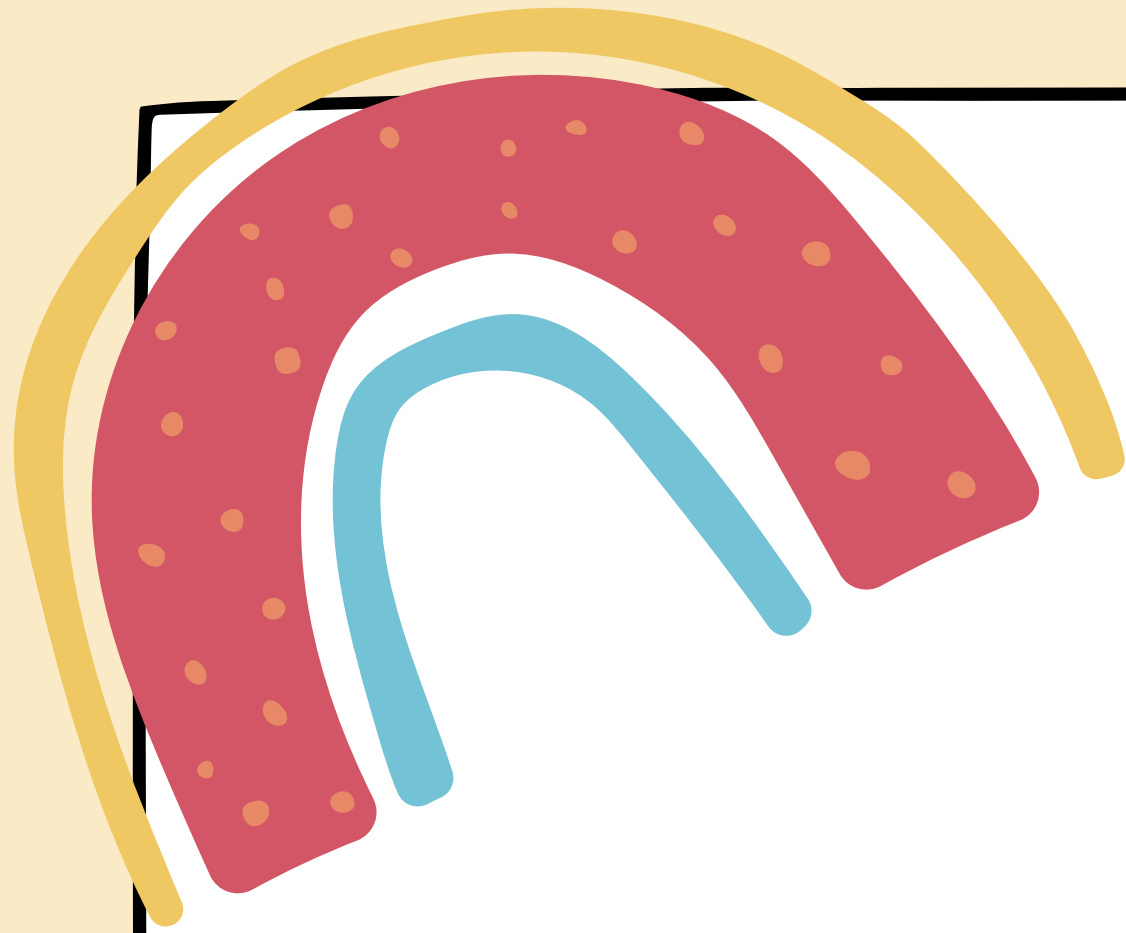
The Fulton County School Board supports rigorous enforcement of Georgia's Compulsory School Attendance Law that makes school attendance the responsibility of the parent and the student. The Georgia Board of Education lawfully excuses students for the following reasons:

- ◆ Personal illness of the student.
- ◆ Attendance at school would be detrimental to the health of the student or others.
- ◆ A serious illness or death in the student's immediate family necessitating absence from school.
- ◆ Observance of religious holidays necessitating absence from school.
- ◆ Conditions rendering attendance impossible or hazardous to the student's health or safety.

ATTENDANCE

A student's absence from school or class for any reason other than those listed above will be considered an unexcused absence. **If an absence meets these requirements, a student may bring a written excuse signed by a parent or guardian the day the student returns to school. Parent/guardian may also send an email to 580-attendanceMOE@fultonschools.org.** If a note is not received within 5 calendar days, the absence is recorded as unexcused. Excessive absences of three or more unexcused absences will result in an autogenerated letter from the school, and continued absences will result in a referral to the school social worker. Please refer to www.fultonschools.org for more information.

?



GRADING

Grading Weights

- 45% - Major Category
- 40% - Minor Category
- 15% - Practice Category

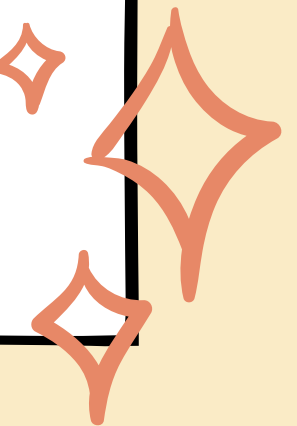
Grading Categories

Student grades determined by using the following categories:

Major: An assignment or assessment that is cumulative in nature that measures learning targets from multiple standards/skills.

Minor: An assignment or assessment that measures an individual learning target, standard, or subset of learning targets/standards/ skills within a unit.

Practice: Daily assignments, observations, and/or engagement activities given in class or for homework to build pre-requisite skills, measure progress towards mastery of a learning target or standard, enrich, and/or remediate skills.



GRADING SCALE

3rd-5th Grade

A 90-100

B 80-89

C 70-79

F 69 and below

NG No Grade

I Incomplete

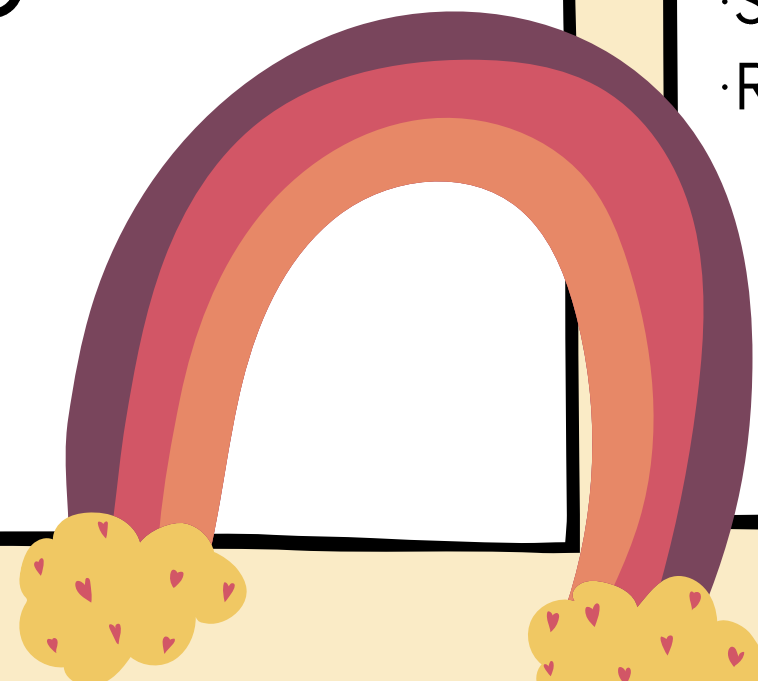
NON ACADEMIC SKILLS

Feedback provided each 9 weeks in areas beyond academic mastery.

Reported for every subject

We will use the following key to report non-academic skills critical to student success.

- Consistently Demonstrates
- Often Demonstrates
- Sometimes Demonstrates
- Rarely Demonstrates



SCIENCE



Habitats, Adaptations, and
Environment

Pollution

Rocks, Minerals, and Soils

Fossils

Heat

SOCIAL STUDIES

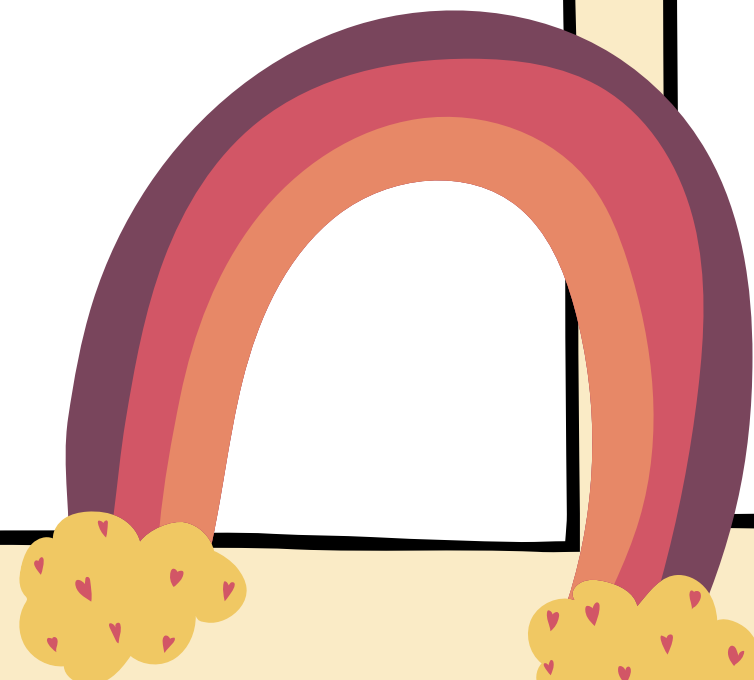
Early American Indian Cultures
European Exploration in North
America

John Cabot, Vasco Nunez de
Balboa, Hernando de Soto,
Christopher Columbus, Henry
Hudson, Jacques Cartier.

Colonial America

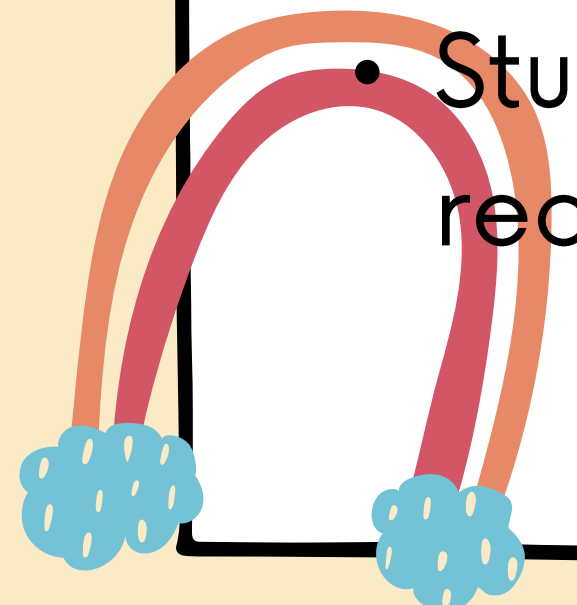

Roots of Our Democracy

Our Economy

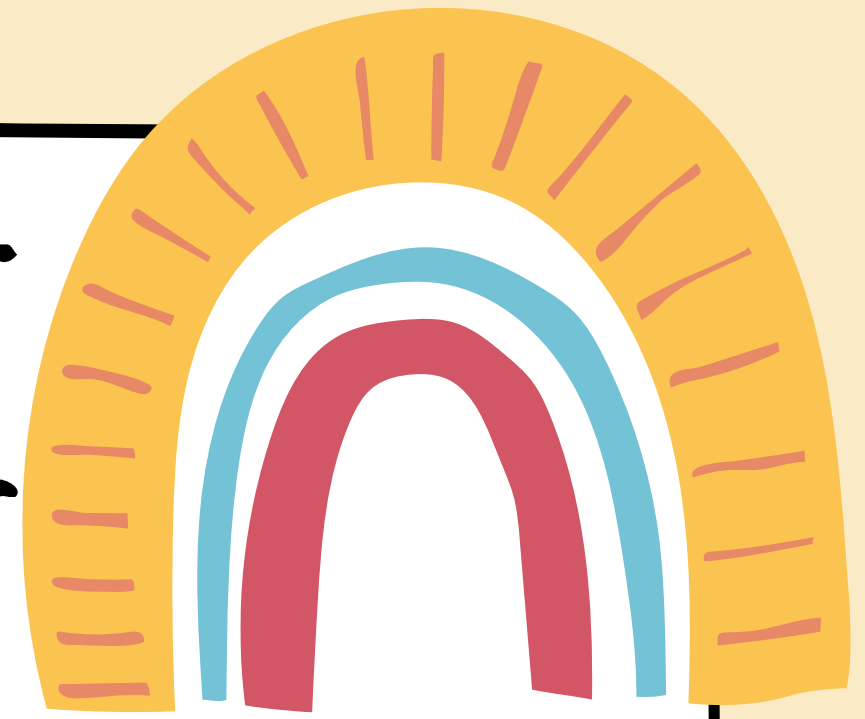




RECOVERY

- Students will be given the opportunity to recover all major assessments if they score below a 75% on the assessment. Students are limited to one recovery attempt per major assessment that meets the threshold for recovery.
 - Recovery of a major assessment should occur before the next major is given.
 - Students are eligible to earn a replacement grade on a recovery that is no higher than 75%.
- 
- 

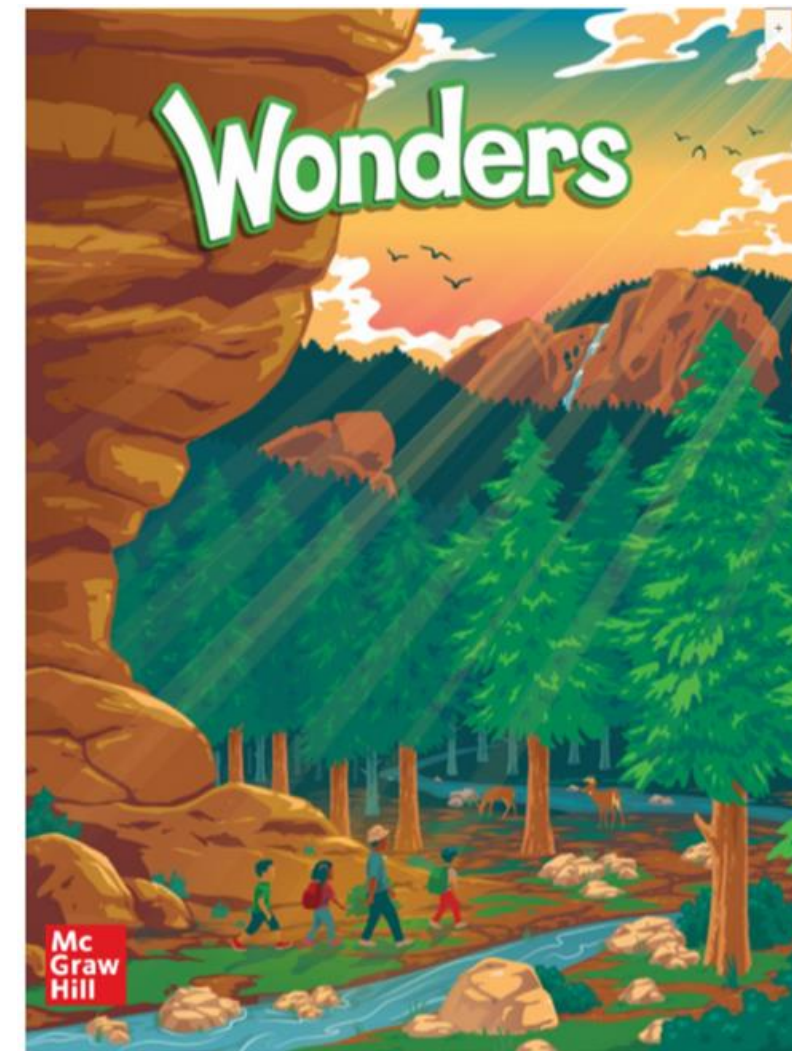
READING CURRICULUM



Students will be taught both literary and informational standards in each unit.

Writing is part the curriculum as well.

- Whole Group Component
- Shared Reading and/or Read Aloud
- Anchor Text
- Companion Workbook Activities

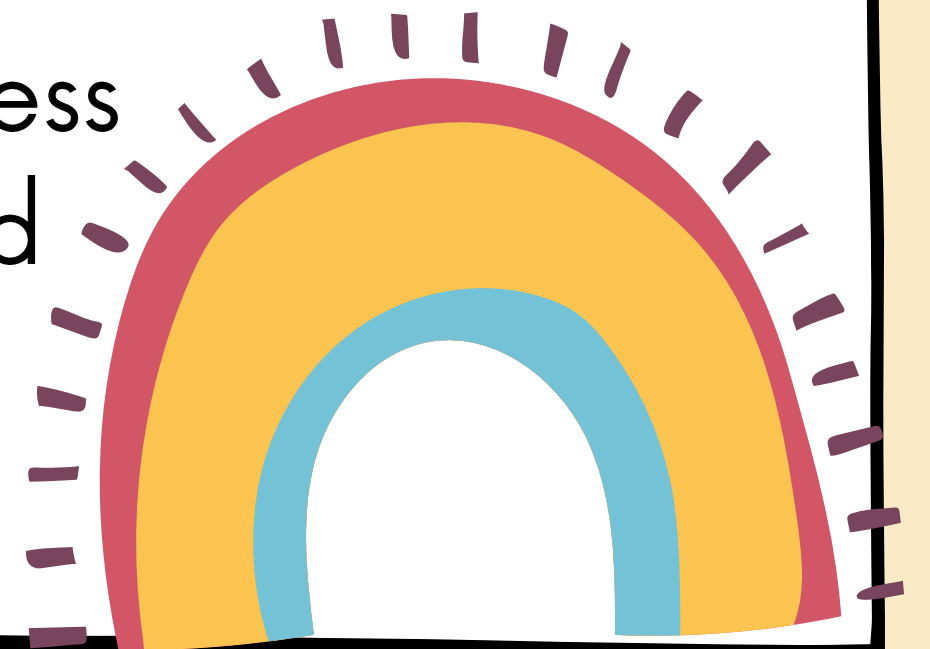


PHONICS



The 95 Phonics Core Program (PCP) is a whole-class, supplemental phonics curriculum.

This Tier I program is designed for students to address and prevent reading gaps using explicit, structured phonics instruction for 20-30 minutes per day.



MATH

FCS Enhanced Mathematics: A Fulton County Board initiative that provides all students with the opportunity to take Algebra in Grade 8

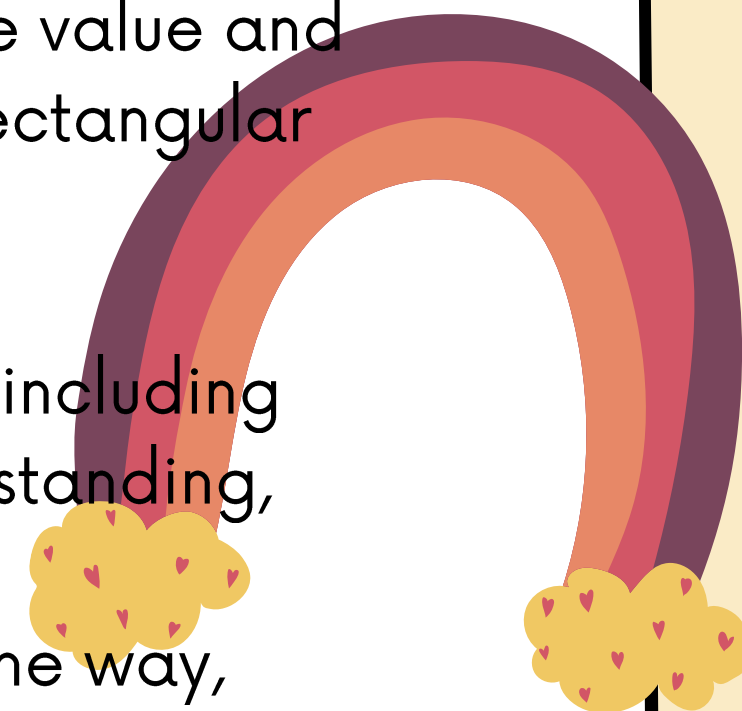
Fluently add and subtract multi-digit numbers to solve practical, mathematical problems using place value understanding, properties of operations, and relationships between operations.

Find factor pairs in the range 1-100 and find multiples of single-digit numbers up to 100.
Identify composite numbers and prime numbers and explain the relationship with the factor pairs.

Solve real-life problems involving multiplication of a number with up to four digits by a 1-digit whole number or involving multiplication of two 2-digit numbers using strategies based on place value and the properties of operations. Illustrate and explain the calculation by using equations, rectangular arrays, and/or area models.

Solve authentic division problems involving up to 3-digit dividends and 1-digit divisors (including whole number quotients with remainders) using strategies based on place-value understanding, properties of operations, and the relationships between operations.

Represent a fraction as a sum of fractions with the same denominator in more than one way, recording with an equation.





QUESTIONS?

Chantal Mercer: mercerc@fultonschools.org

Jasmine Rozier: rozierj@fultonschools.org

Carla Driggs: driggs@fultonschools.org

Heather Hadarits: hadaritsh@fultonschools.org

Caroline Parham: parhamc2@fultonschools.org

Laura Hussey: husseyl@fultonschools.org

